



MARCH
21ST & 22ND
2019
PADUA
ITALY

CLIC
Critical Limb Ischemia Course

LIVE CASES
Thursday, March 21st

CASE 2

Operators:

Dr. Palena – Dr. Herrero – Dr. Thomas

UNRESTRICTED
SPONSORING



Abbott

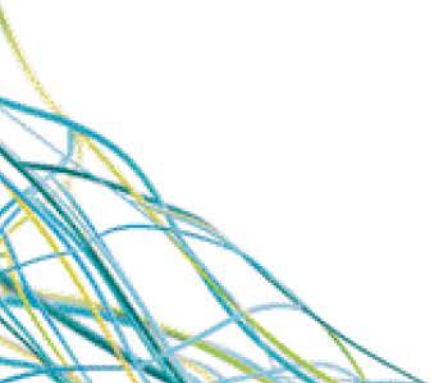
CASE 2

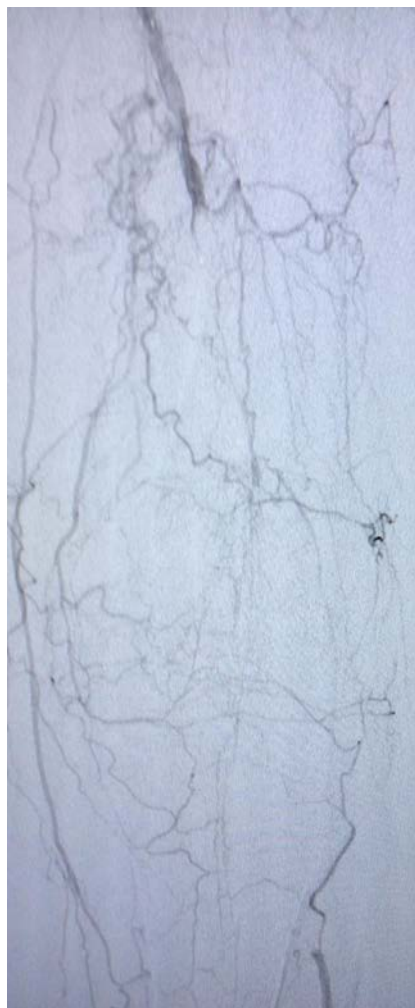
Female, 80 y-o, type 2 diabetes, ischemic heart disease (PTCA + stent).

Left CLI. Gangrene in 1 toe-MPJ, ulcer in the second toe and in the calcaneal region.

POP recanalization fails antegrade, other hospital.

CASE 2





CASE 2

Strategy:

Antegrade 6F access and antegrade attempt (CTO GW).

Retrograde access in proximal ATA.

PTA and Supera[®] stent.